

DIBOND®

THE ALUMINUM COMPOSITE MATERIAL (ACM) FAMILY

- **Dibond®** has been the industry's leading ACM for more than 15+ years. It is comprised of two pre-painted sheets of .012" aluminum with a solid polyethylene core.
- **e-panel™** is comprised of two pre-painted sheets of .008" aluminum with a solid polyethylene core, and manufactured in China.
- **epL-5™** is comprised of two pre-painted sheets of .005" aluminum with a solid polyethylene core, and manufactured in China.

WHY CHOOSE DIBOND®?

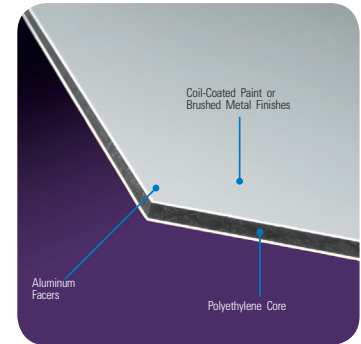
- Flattest panel on the market
- Superior surface protects expensive digital and screen-printed graphics
- Provides excellent durability in outdoor applications
- Won't bow or oil can
- Approximately one half the weight of a solid aluminum sheet
- Can be routed and returned to add dimension or roll-formed to deliver sweeping curves
- Self extinguishing; UL 94V-0 and Class 1 or Class A fire rating (ASTM E-84)

WHY CHOOSE E-PANEL™?

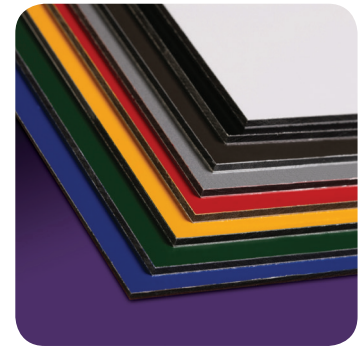
- Recommended for flat panel applications
- Suitable to mount graphics
- Suitable for digital & screen printing
- Can be saw cut, routed or punched
- Class A fire rating (ASTM E-84)

WHY CHOOSE EPL-5™?

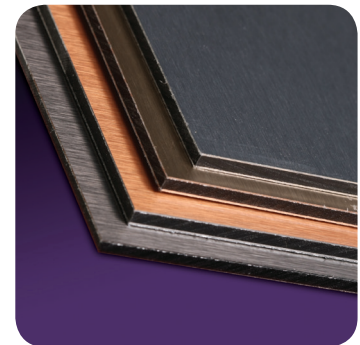
- Recommended for flat panel applications
- Suitable to mount graphics
- Suitable for printing
- Can be saw cut, routed or punched



Dibond



Dibond Colors



Dibond Metal Series

PRODUCT AVAILABILITY

	Gauges	Colors			Sizes
Dibond®	2mm, 3mm, 4mm	White Black Dark Bronze Fine Silver	Hunter Red Caution Yellow Dark Green Ultra Marine Blue	Brushed Silver Brushed Bronze Brushed Copper Brushed Stainless	Standard sheet size for all colors and brushed metals is 48" x 96" White is also standard in 60" x 120" All colors (excluding brushed metals) available in 60" widths custom sheet sizes available
e-panel™	2mm, 3mm, 4mm, 6mm	White	Brushed Silver	Mill Finish (aluminum)	48" x 96", 60" x 120"
epL-5™	3mm	White			48" x 96"

Due to multiple product configurations, please refer to the website for product availability in the desired thickness and size.

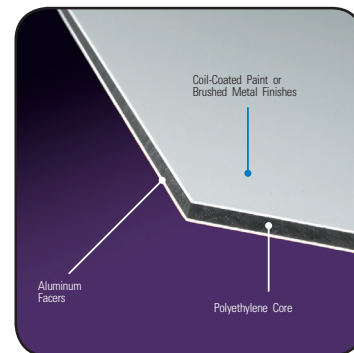


This product guide provides only general application information and is not intended to include all potential product uses. No express or implied warranties are contained herein. Fome-Cor®, Sintra®, Gator®, Dispa®, Hylite® and Dibond® are registered trademarks of 3A Composites USA, Inc. ValuBoard™, FiberMate™, e-pvc™ and e-panel™ are trademarks of 3A Composites USA, Inc. ©3A Composites USA, Inc. 2018. All Rights Reserved.



DIBOND® SPECIFICATIONS

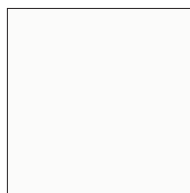
	4' X 8' (1.22 M X 2.44 M)	4' X 10' (1.22 M X 3.05 M)	5' X 10' (1.52 M X 3.05 M)
White over White	2mm, 3mm, 4mm	2mm	3mm
White over Black	3mm	3mm	
Dark Bronze over Fine Silver	3mm		
Hunter Red over Caution Yellow	3mm		
Dark Green over Ultra Marine Blue	3mm		
All Metal Series Colors*	3mm		



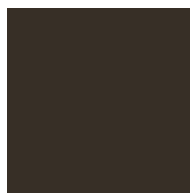
*Brushed Silver is backed by Fine Silver. Brushed Bronze, Copper, and Stainless are backed by White. Custom sizes, colors and thicknesses available upon request.

For updated colors and sizes, please visit us at graphicdisplay.com or call us at 800.626.3365.

DIBOND® COLORS



White



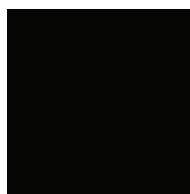
Dark Bronze



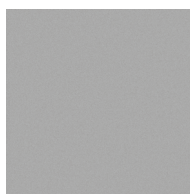
Hunter Red



Dark Green



Black



Fine Silver

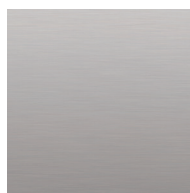


Caution Yellow



Ultra Marine Blue

DIBOND® METAL SERIES



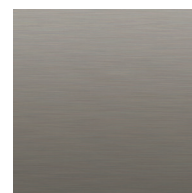
Brushed Silver



Brushed Bronze



Brushed Copper



Brushed Stainless

Distributed by:  PolymerShapes Call: 1 (866) 437-7427
Email: info@polymershapes.com



This product guide provides only general application information and is not intended to include all potential product uses. No express or implied warranties are contained herein. Fome-Cor®, Sintra®, Gator®, Dispa®, Hylite® and Dibond® are registered trademarks of 3A Composites USA, Inc. ValuBoard™, FiberMate™, e-pvc™ and e-panel™ are trademarks of 3A Composites USA, Inc. ©3A Composites USA, Inc. 2018. All Rights Reserved.