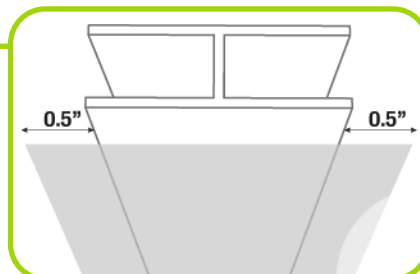


Wrapping a connector with vinyl is recommended to create continuous large graphics that combine more than one rigid board. Use any calendered 3mil+ vinyl of your preference and print it with the same machine used to print the boards to avoid color variation.

STEP 1:

Create a vinyl strip as long as the connector you want to wrap and 1" wider so, it leaves 0.5" on each side to wrap the edges of it. The image to be printed on the strip has to coincide with the exact position of the connector in the graphic. **Tip:** for better alignment, get the exact measurements of the boards to be used (they all vary).



STEP 2:

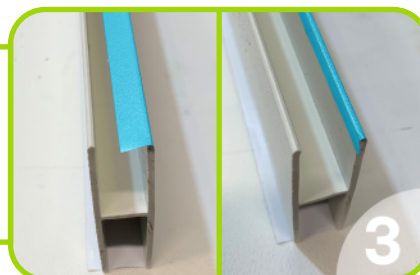
Once the vinyl strip is printed and cut to size, apply it to the connector. **Tip:** for better alignment, insert the blank connector in the printed board and then apply the vinyl using the board graphics as a reference. Avoid stretching of the vinyl.

Note: Edges of the boards have to be previously reduced to facilitate the insertion of the connector (see Tech Tip: How to reduce board edges using the ERT Tool).



STEP 3:

Remove the connector from the board and secure it on a table (clamps work for this purpose). Finish wrapping the edges of the connector.



STEP 4:

Repeat the steps above for all connectors and assemble the final product.

